



ST HELENS
BOROUGH COUNCIL



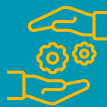
St Helens College

SUPPORTED INTERNSHIPS



The Programme

The Supported Internship programme is an educational course at St Helens College offered to young people aged 16-24 who are in possession of an Education Health and Care Plan (EHCP)



Work Experience

Most of the learning is done at work and 'on the job' and will give you hands on, practical work experience. If you are looking to go into employment but require additional support to do so, then a supported internship could be perfect for you!



Employability Skills

As a Supported Intern, you will spend three to four days a week in a work placement, gaining valuable skills and experience and one day a week at St Helens College, developing your English, maths and employability skills.



Support & Guidance

You will be assigned a job coach as part of the internship who will help to support you in both the workplace and classroom. You will also have the chance to work on your personal, social & independence skills to help give you the best chance of employment and to help to prepare you for your next steps towards employment



Preparation for Adulthood

We will work with you prior to the internship, during and also after it finishes. This includes helping you to gain employment, independent travel training, job searching/applications, benefits, housing and other factors you may need assistance with.

Contact Us :



<https://www.sthelens.ac.uk/courses/supported-internship-programme>



07895 214 440



andrewrimmer@sthelens.gov.uk